

Figure 1: Exploded view of the monorail camera (simplified)

- 1 Optical bench
- 2 Monorail
- 3 Tripod block
- 4 Sliders (front and rear)
- 5 Front standard
- 6 Rear standard
- 7 Front frame
- 8 Rear frame
- 9 Lensboard
- 10 Springback
- 11 Bellows
- 12 Lens
- 13 Ground glass frame

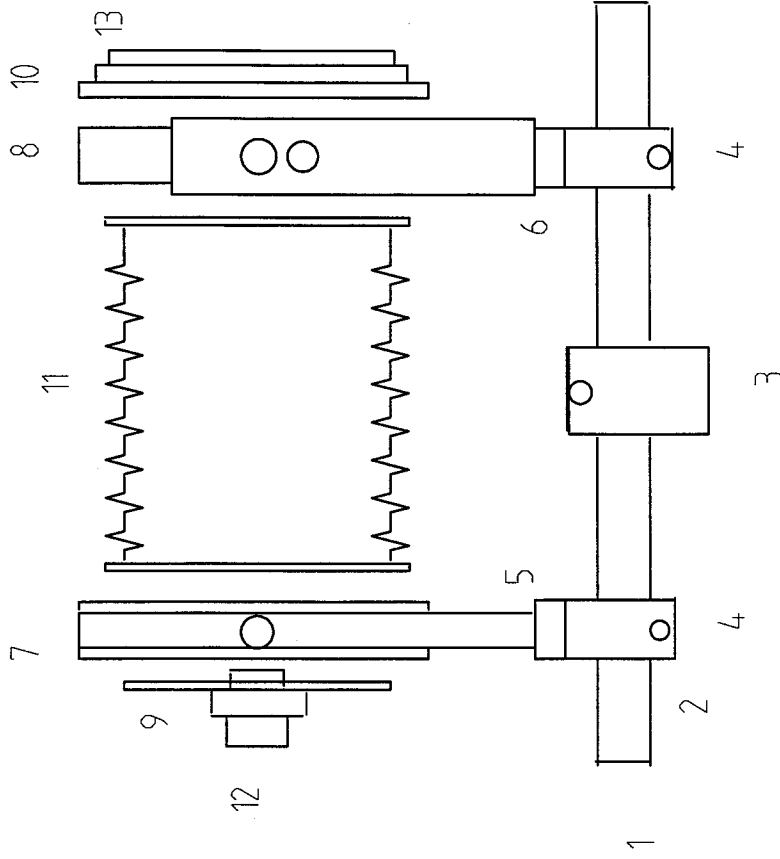


Figure 2: Front view

- 4 Slider
- 5 Front standard
- 7 Front frame
- 9 Lensboard
- 18 Control knob
- 20 Bolt and wing nut
- 21 Frame connector
- 22 Lensboard lock (upper)
- 23 Lensboard lock (lower)

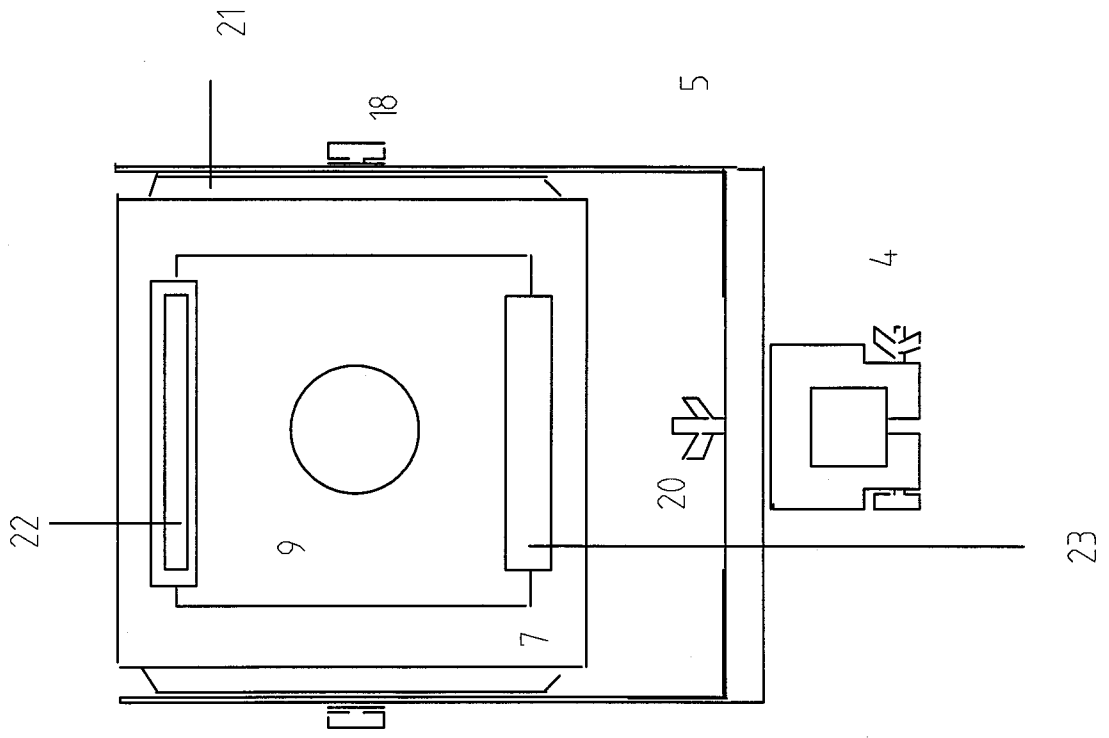


Figure 3: End view

- 4 Slider
- 6 Rear standard
- 13 Ground glass frame
- 14 Ground glass
- 15 Film holder seat
- 16 Leaf springs
- 17 Springback lock
- 18 Control knob
- 19 Wing nut
- 20 Bolt and wing nut
- 21 Frame connector

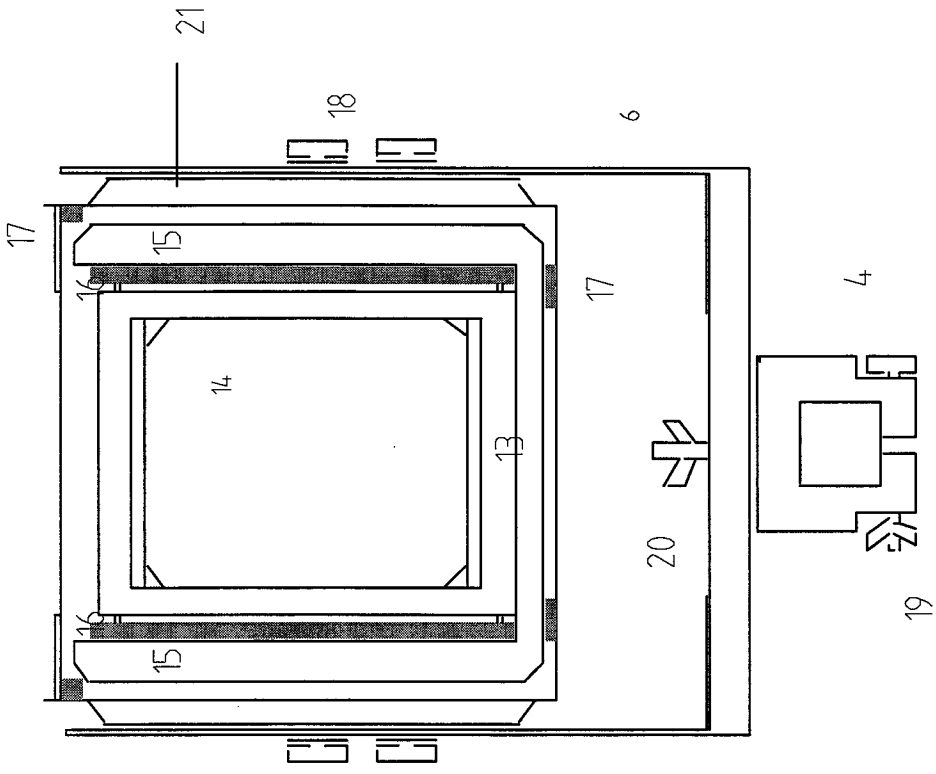


Figure 4: Front frame

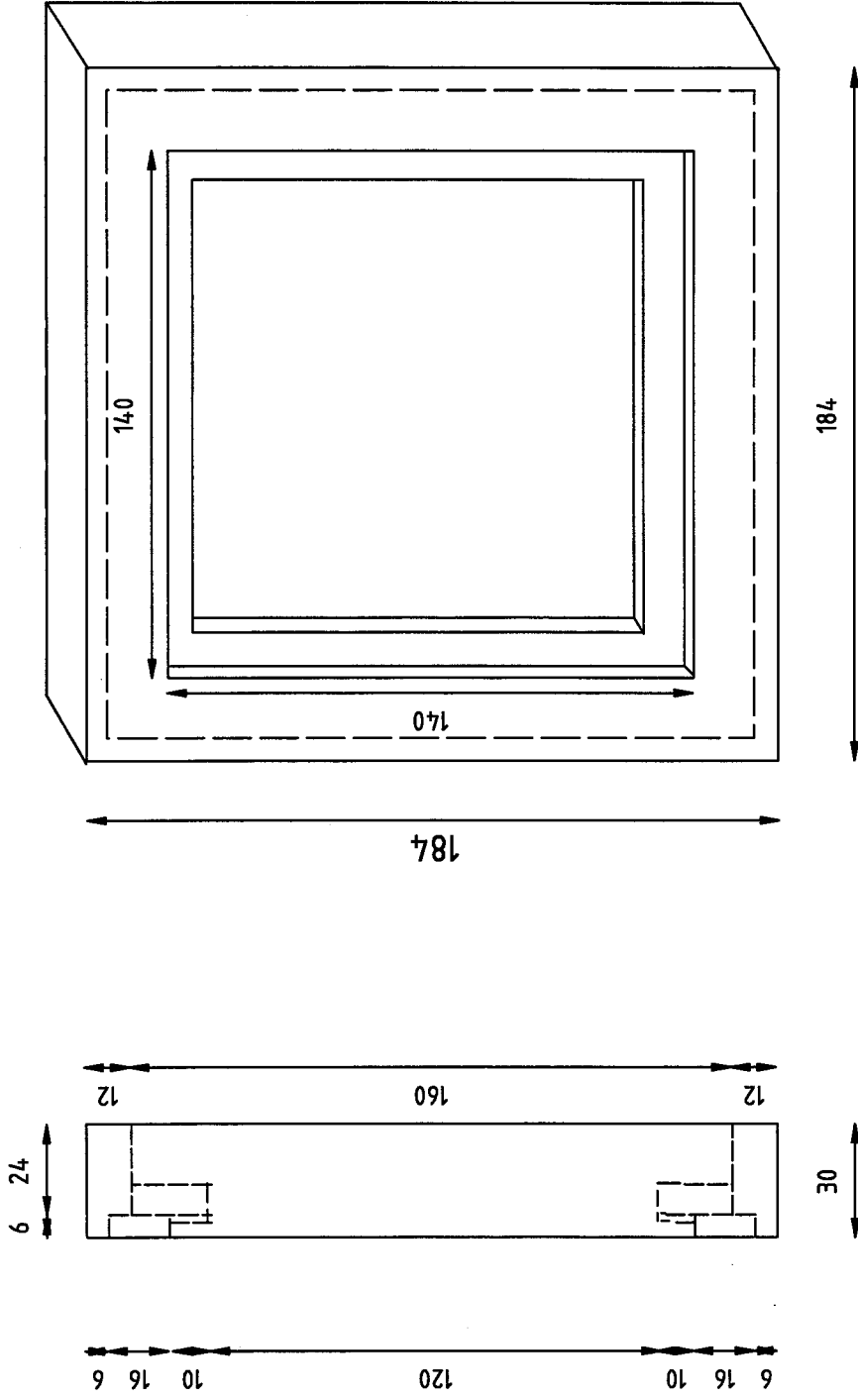


Figure 5: Front frame (hardwood strips with rabbet)

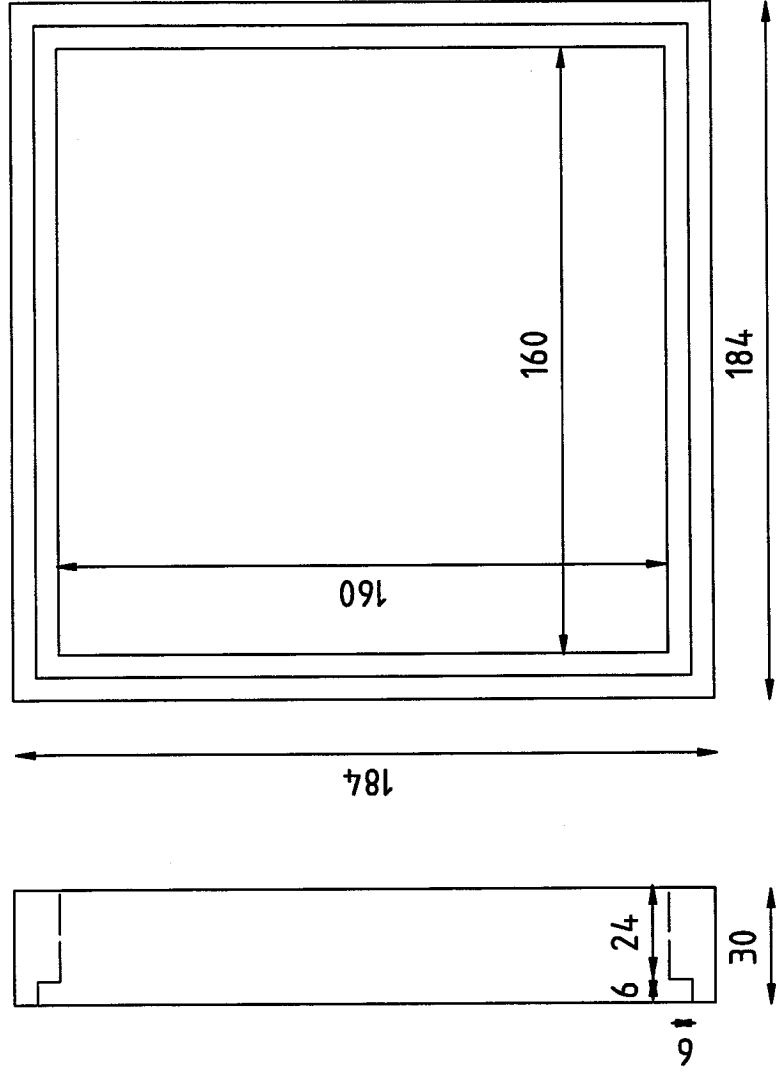


Figure 6: Front frame - plywood square

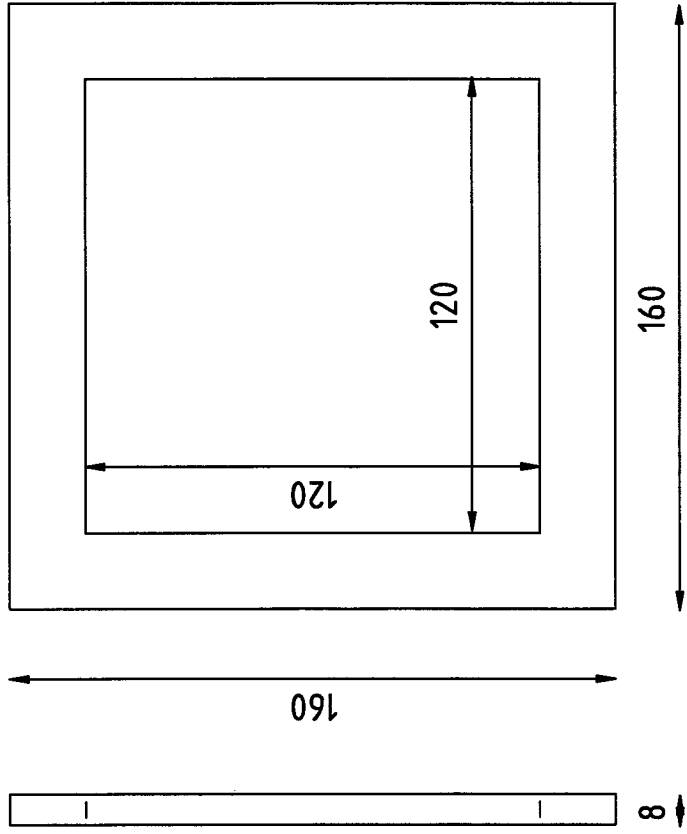


Figure 7: Front frame (with plywood square)

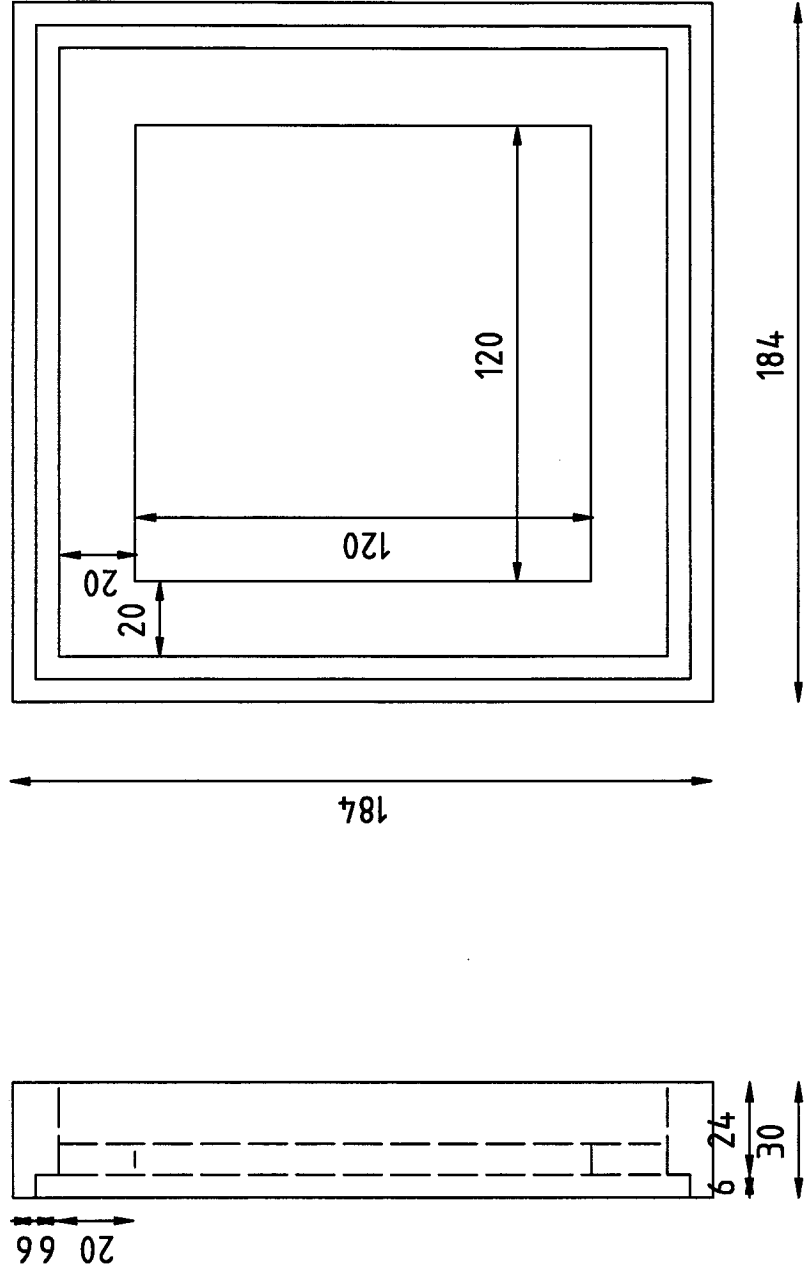


Figure 8: Front frame with frame connector

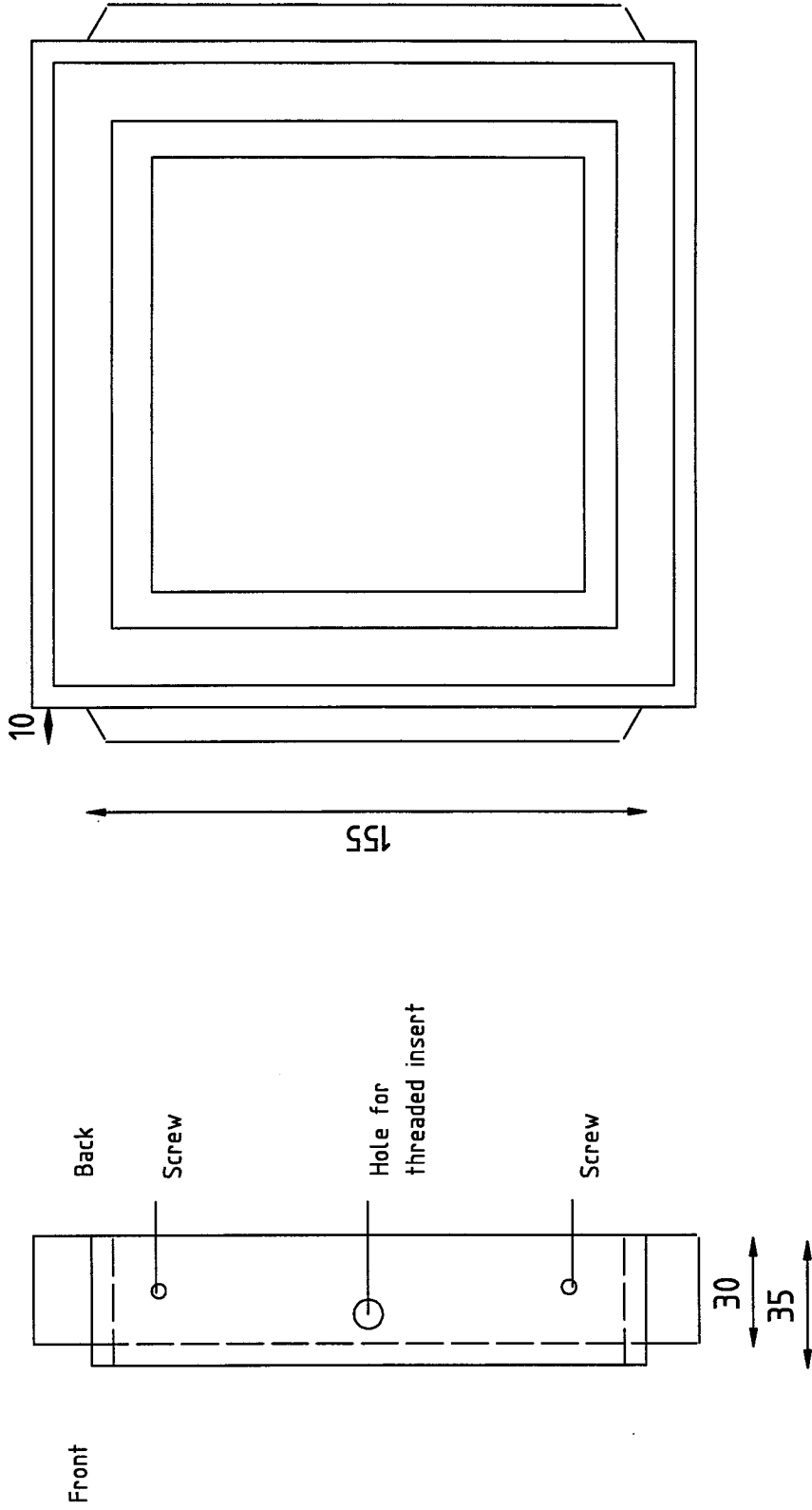




Figure 9: Rear frame

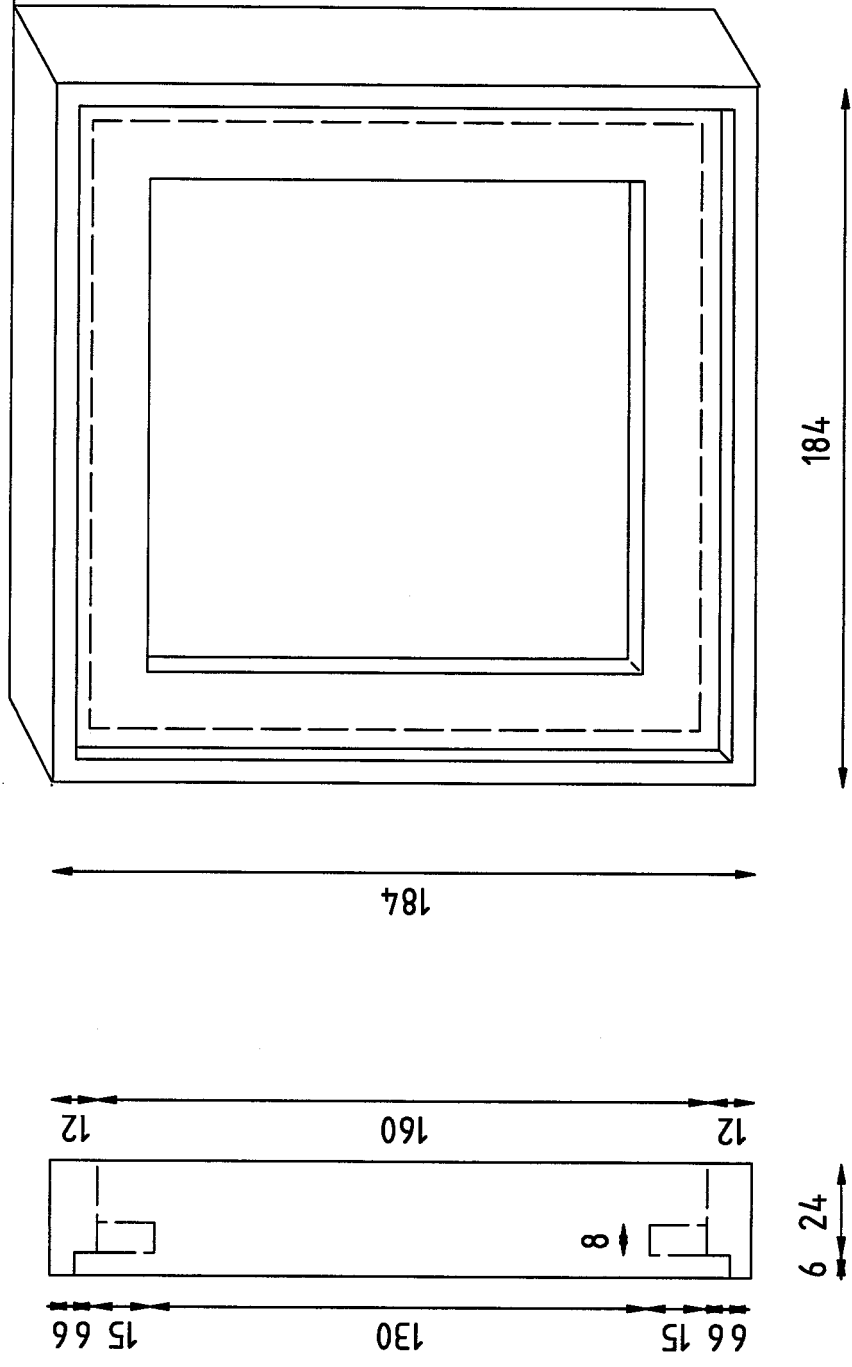


Figure 10: Rear frame - plywood square

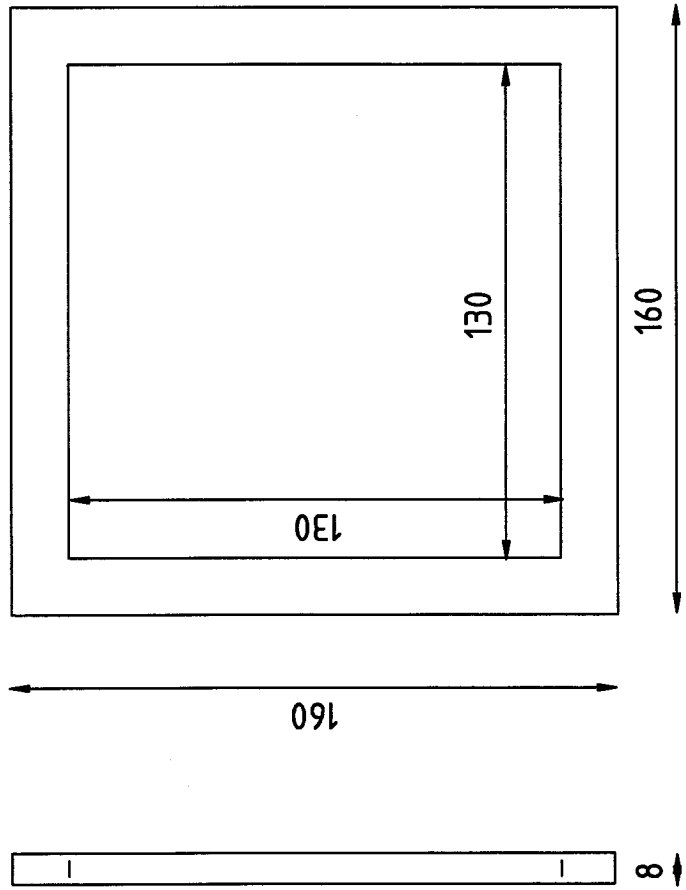


Figure 11: Rear frame (with plywood square)

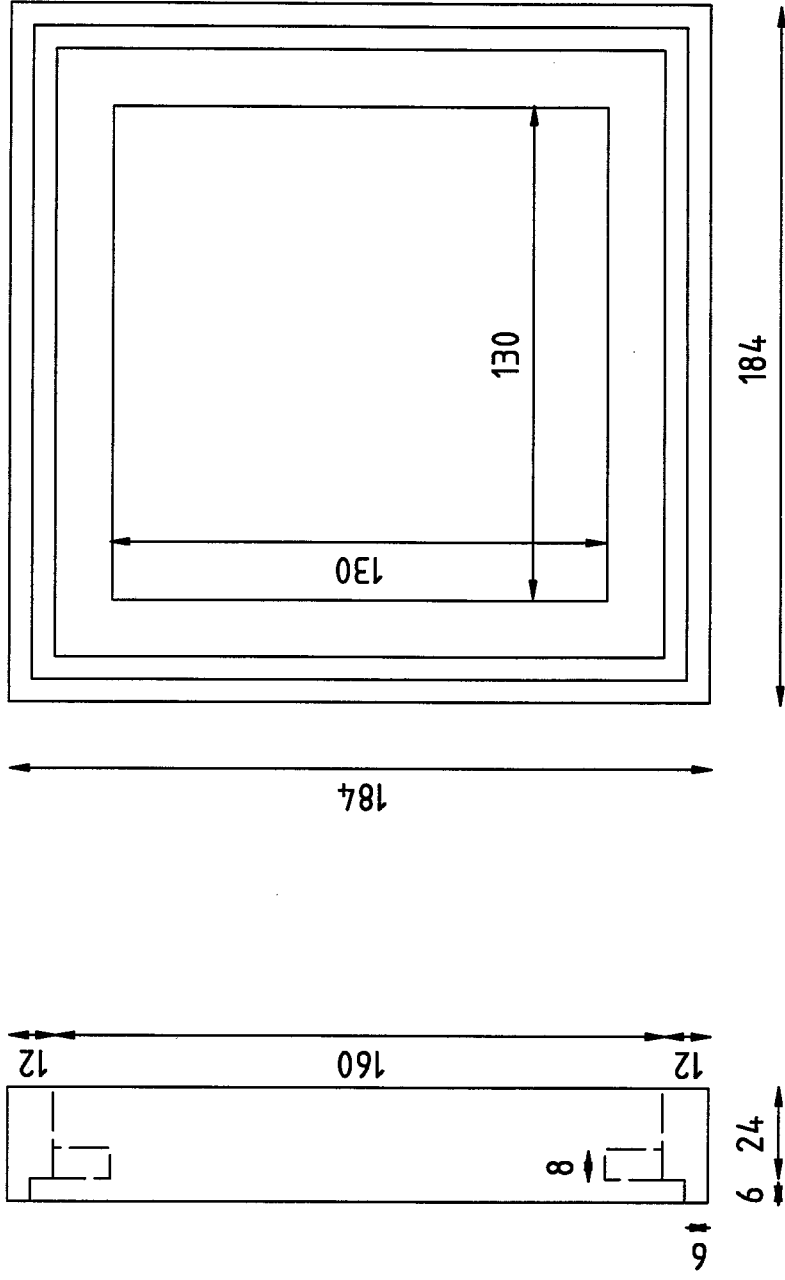


Figure 12: Rear frame with frame connector

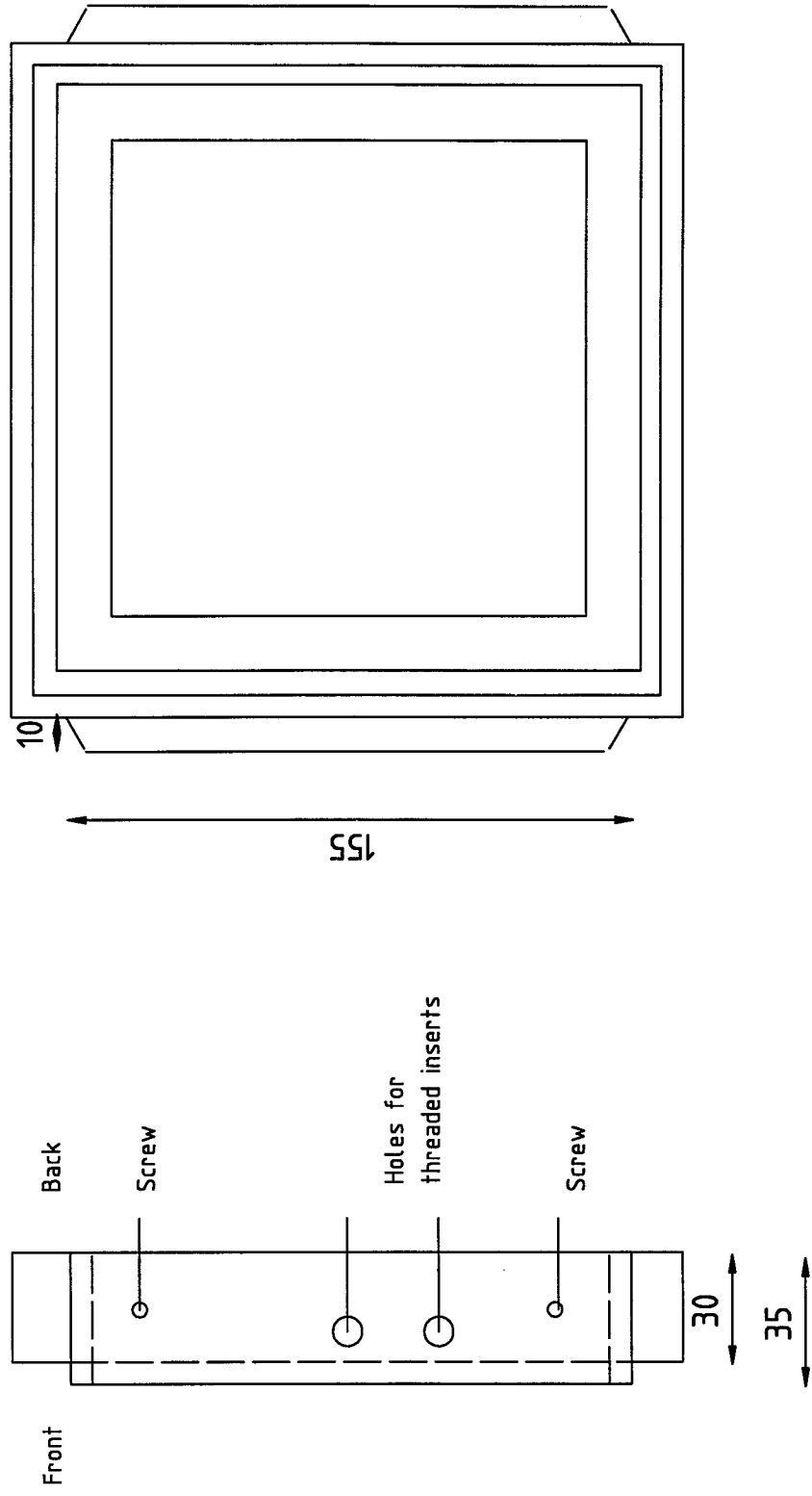


Figure 13: Lensboard

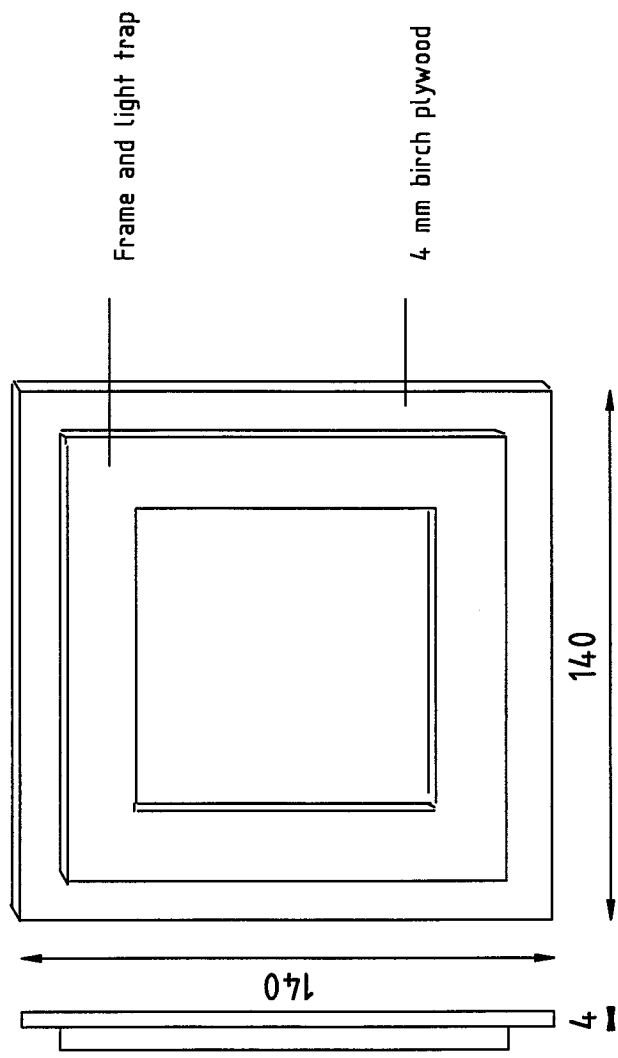


Figure 14: Spring back (sketch)

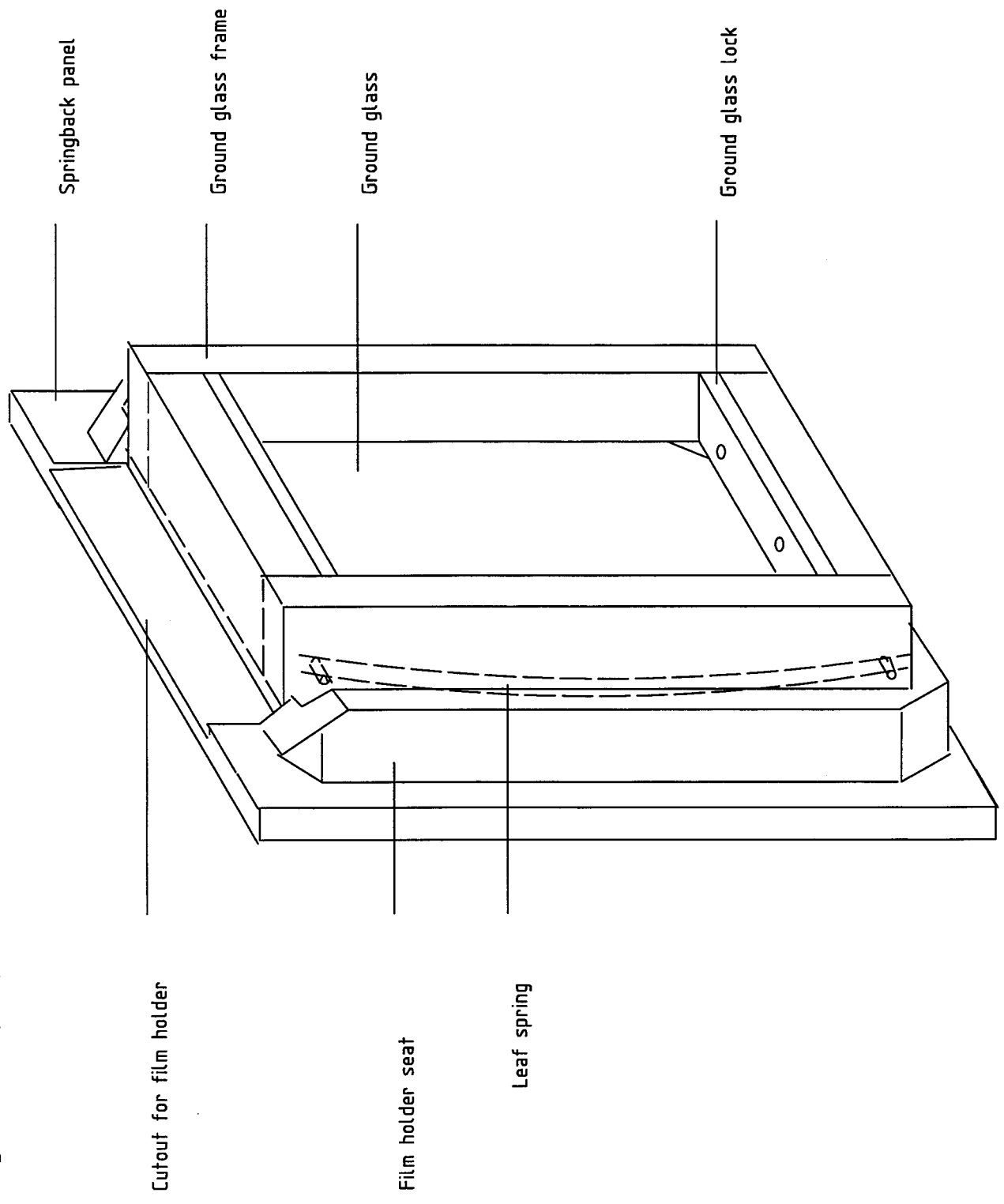


Figure 15: Spring back (end view and side view)

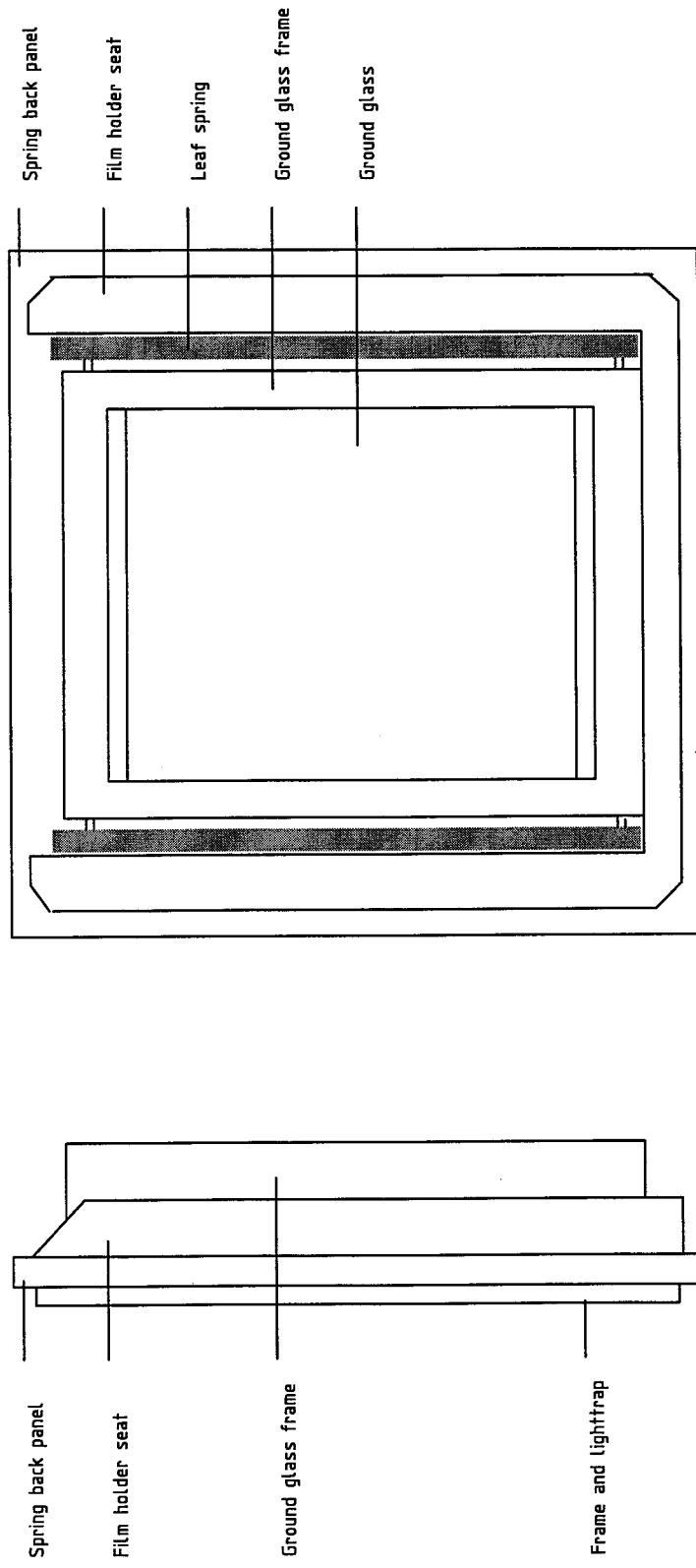


Figure 16: Spring back panel

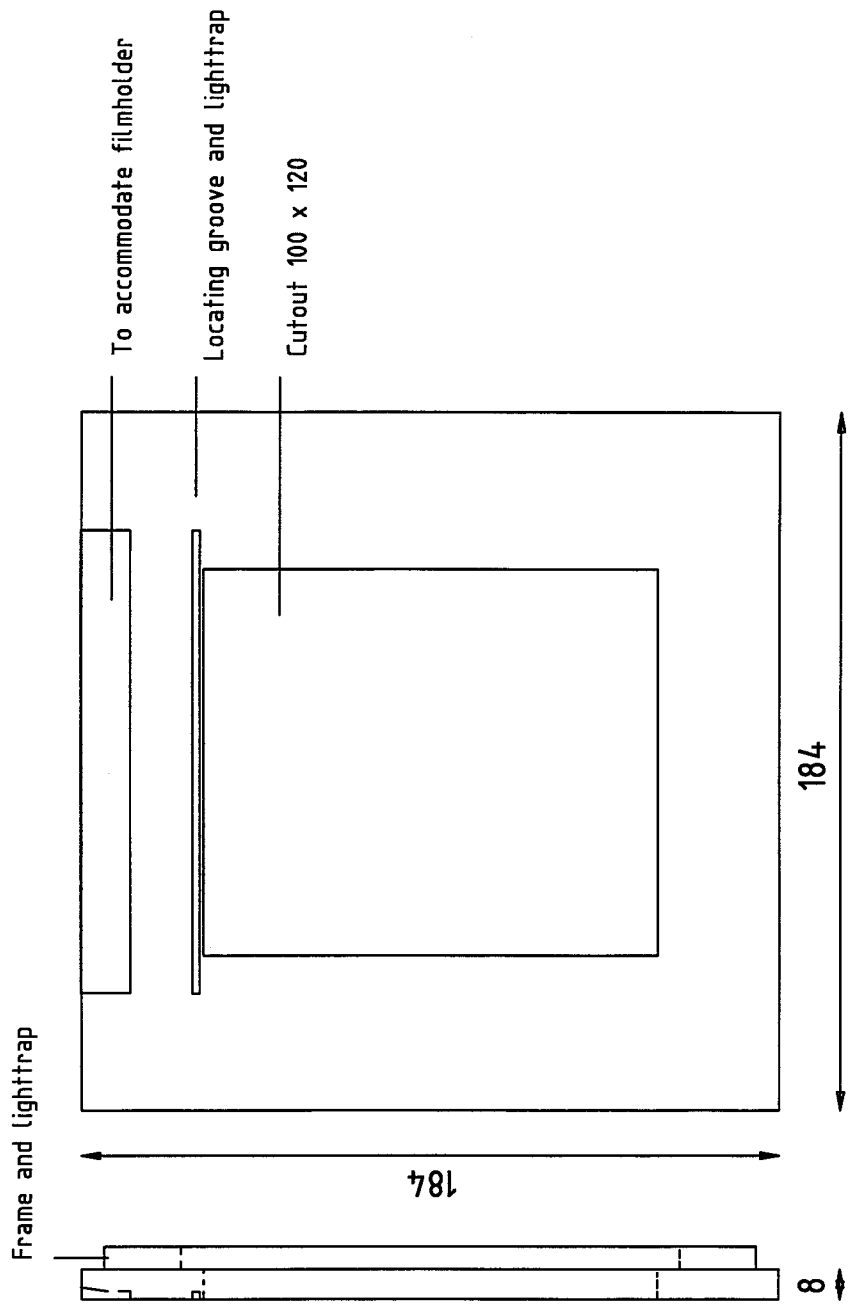




Figure 17: Film holder seat on spring back panel  
(end view, side view, top view)

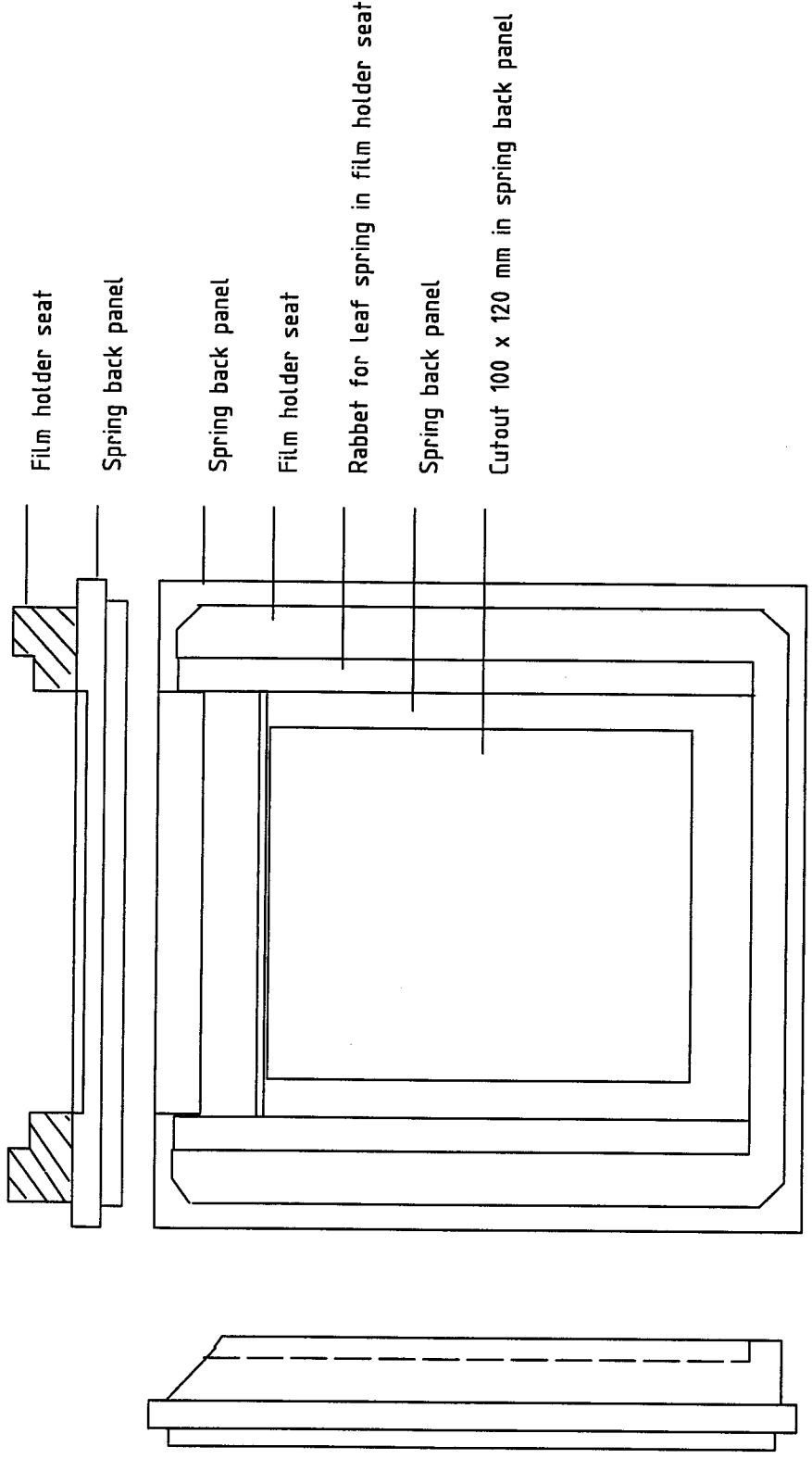


Figure 18: Ground glass frame (sketch)

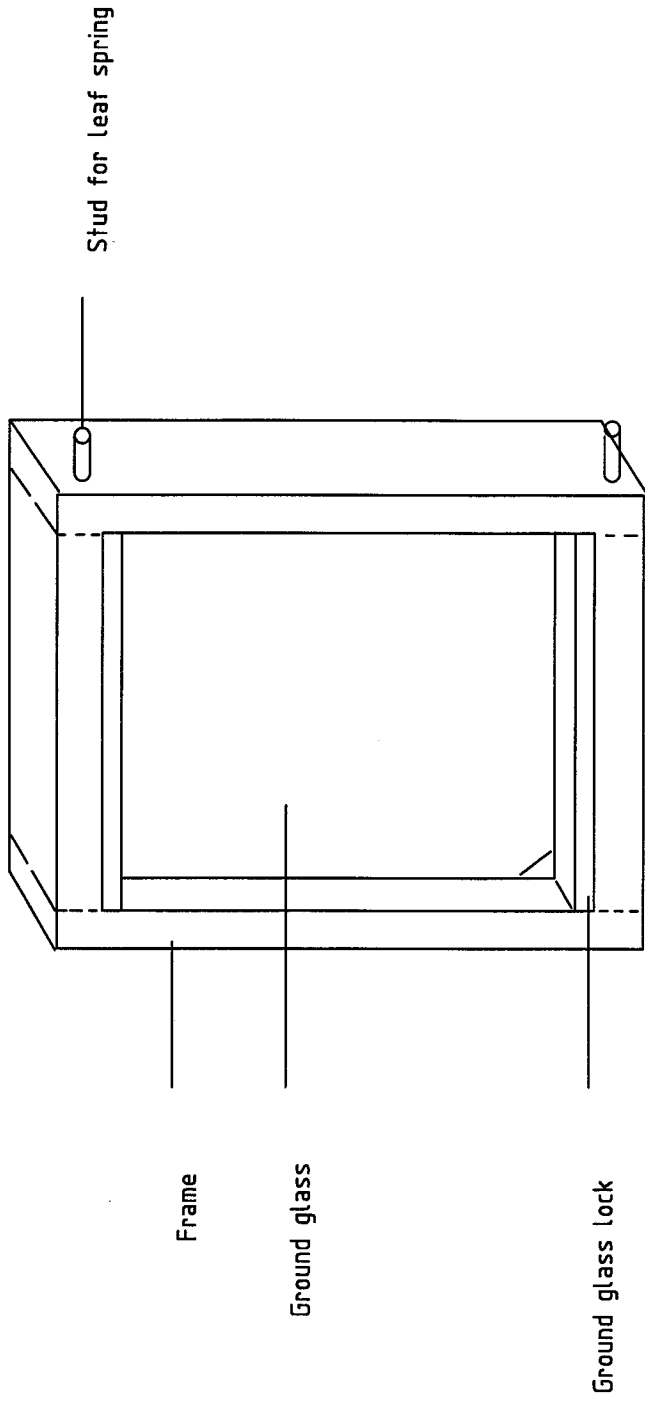
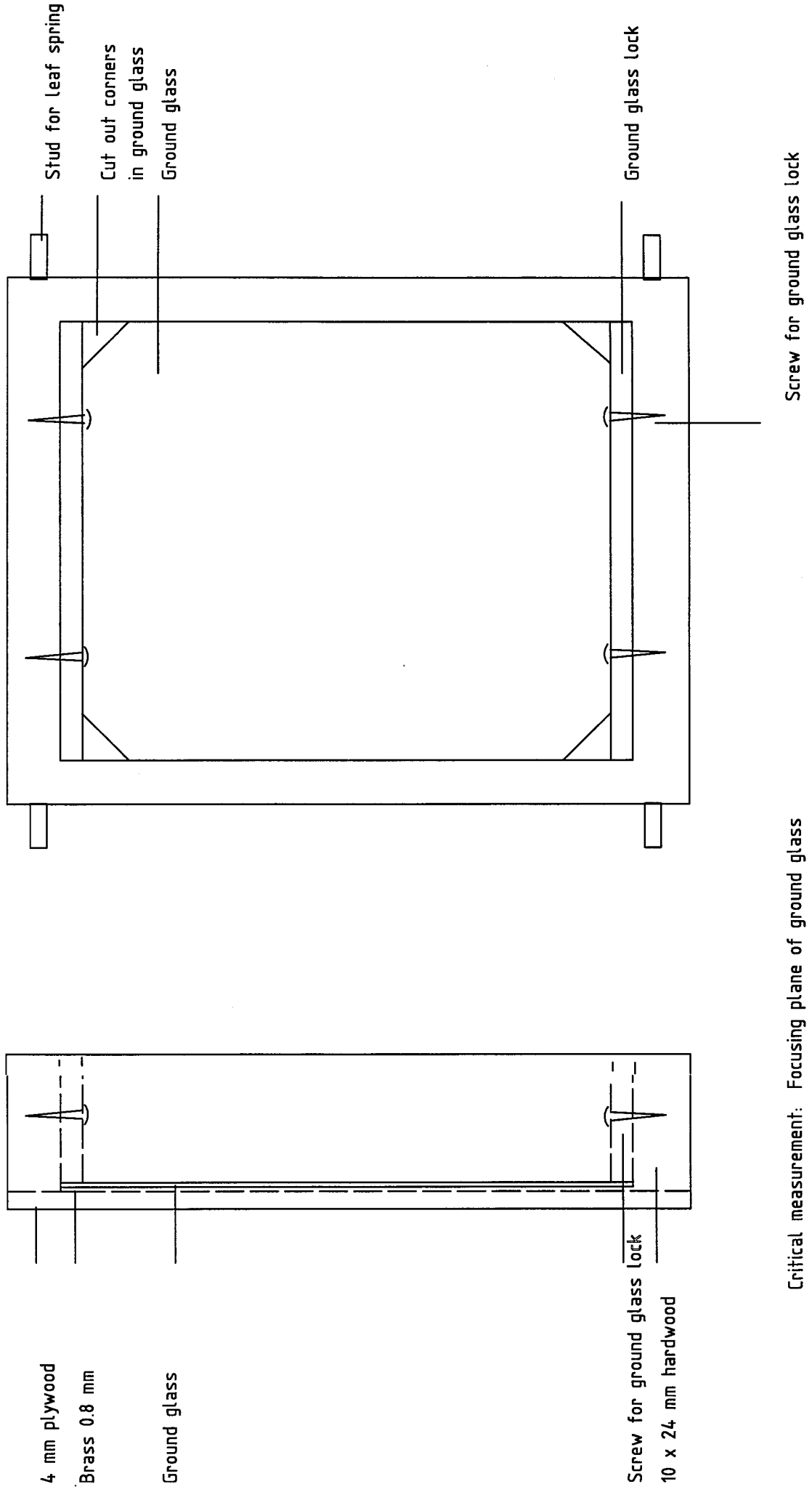
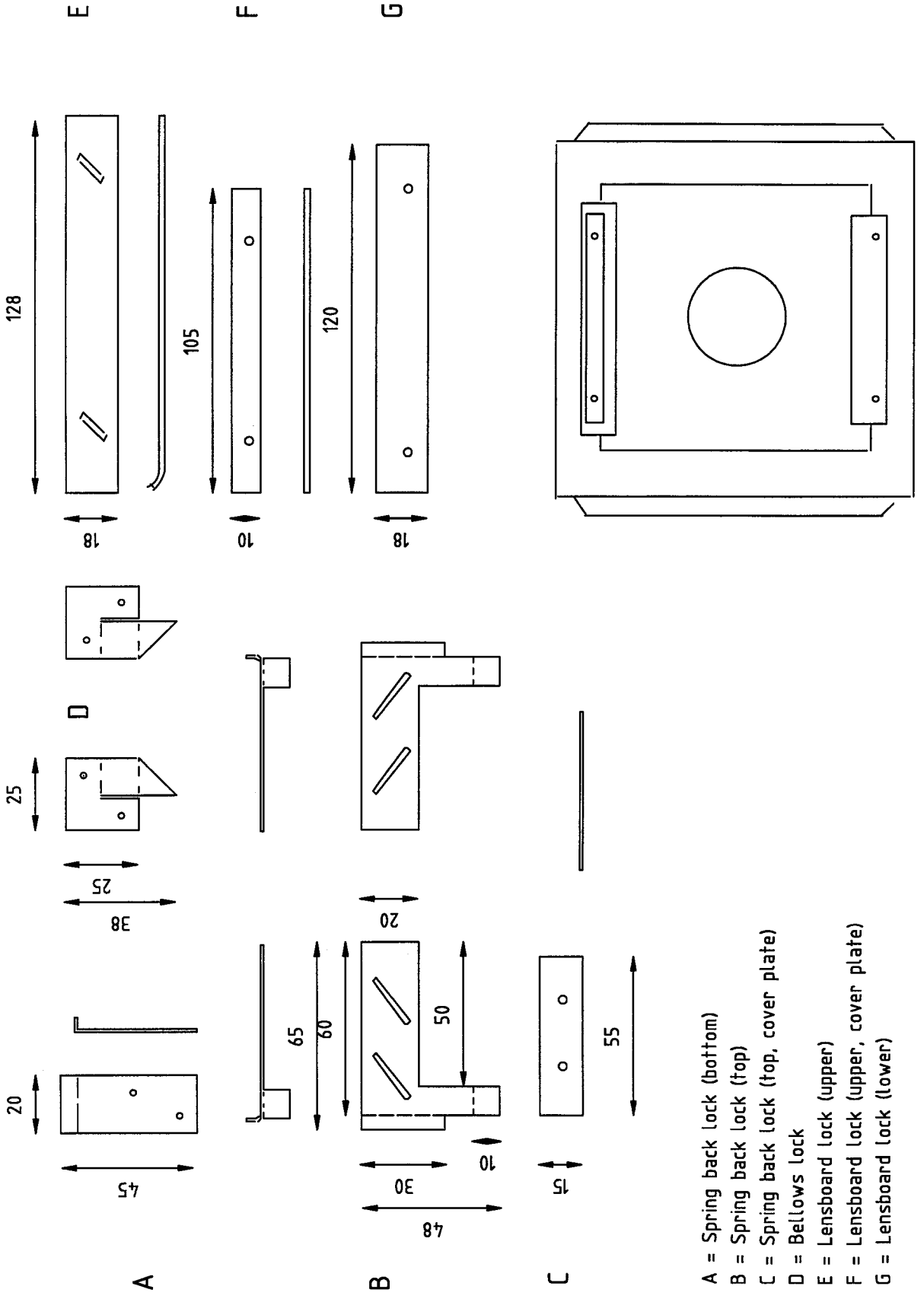


Figure 19: Ground glass frame



Critical measurement: Focusing plane of ground glass should be 4.8 mm from bottom of ground glass frame

Figure 20: Brass fittings



- A = Spring back lock (bottom)
- B = Spring back lock (top)
- C = Spring back lock (top, cover plate)
- D = Bellows lock
- E = Lensboard lock (upper)
- F = Lensboard lock (upper, cover plate)
- G = Lensboard lock (lower)

Measurements depend on design.

Figure 21: Spring back lock

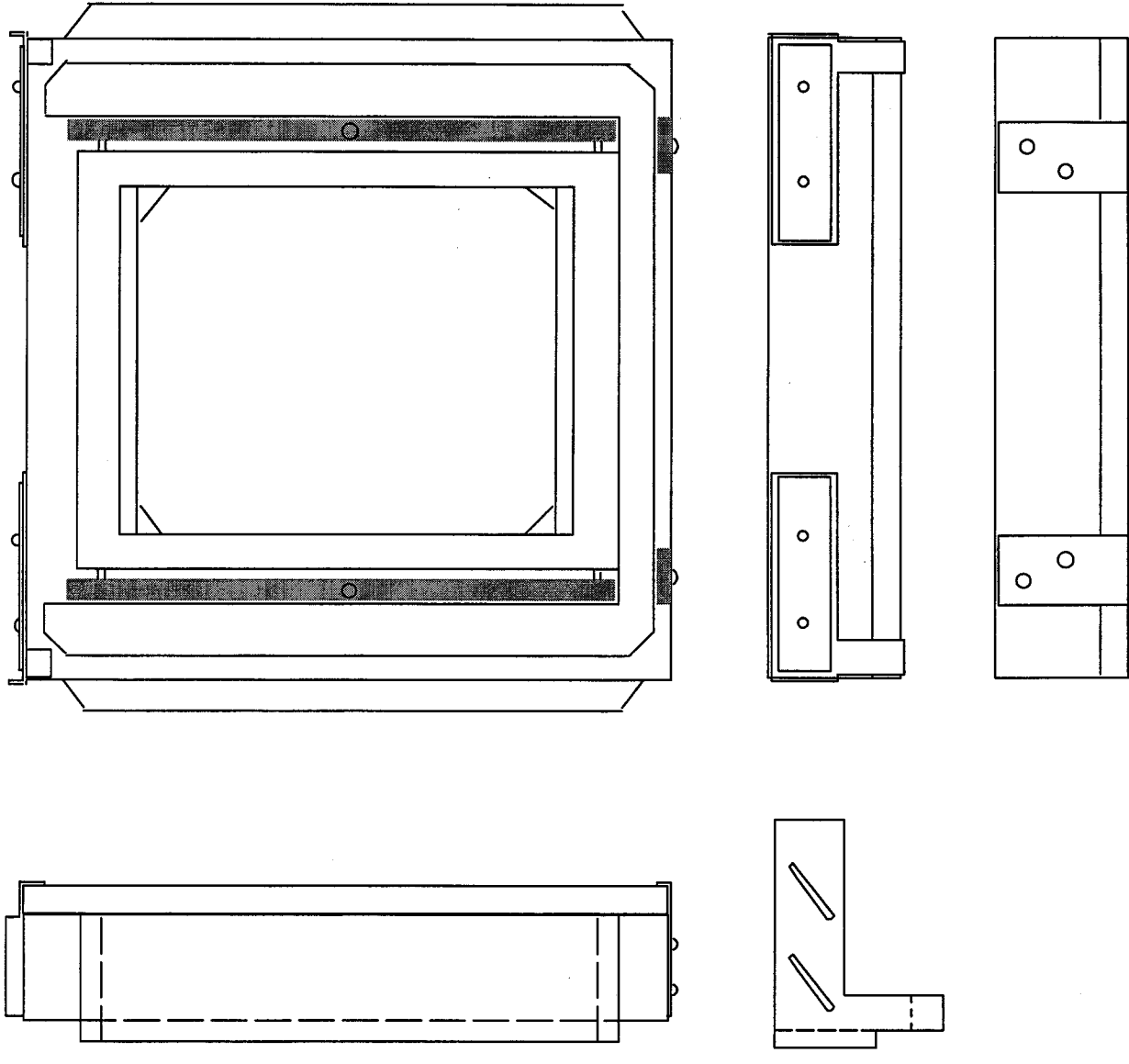


Figure 22: Front standard

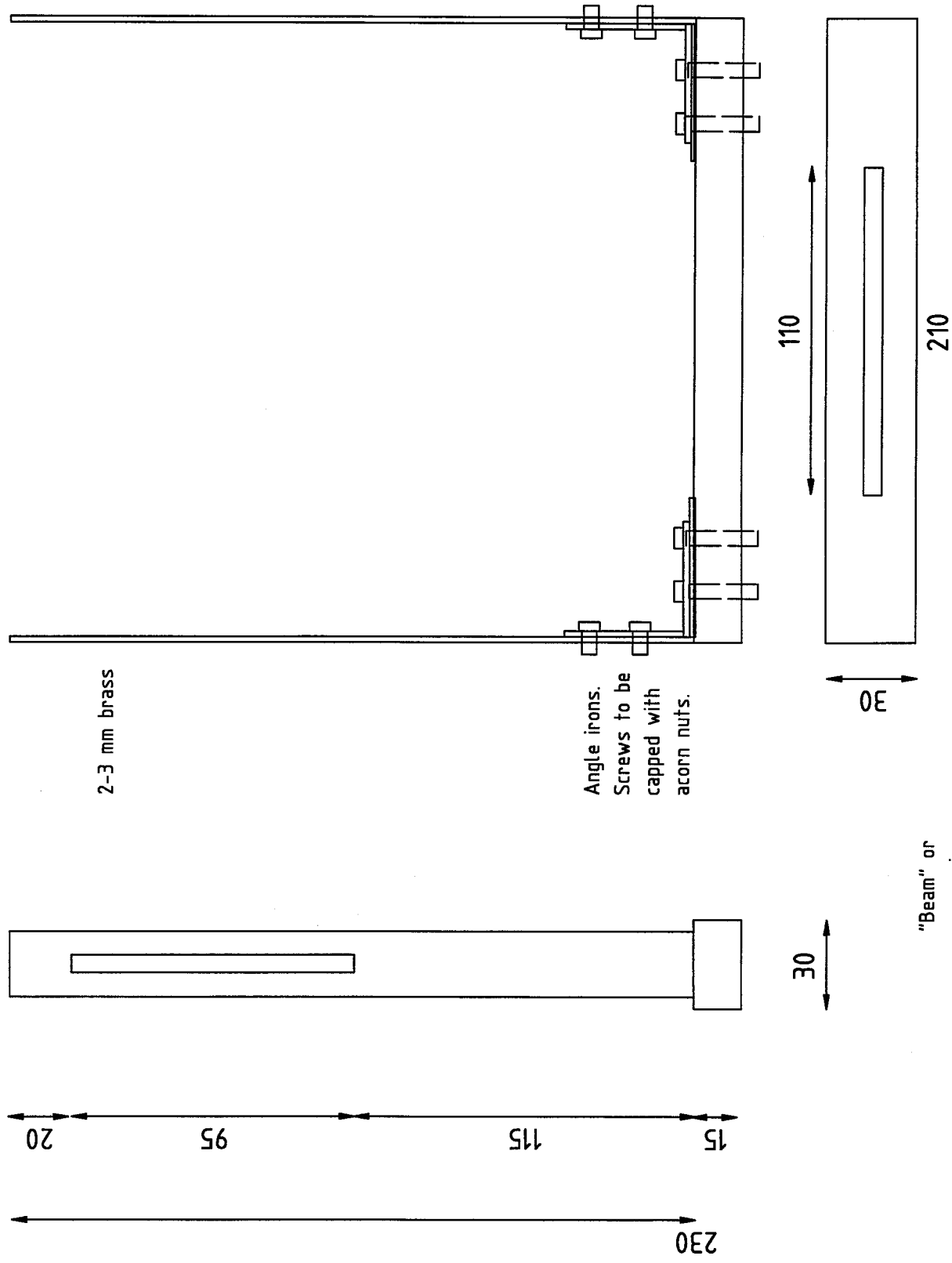


Figure 23: Rear standard

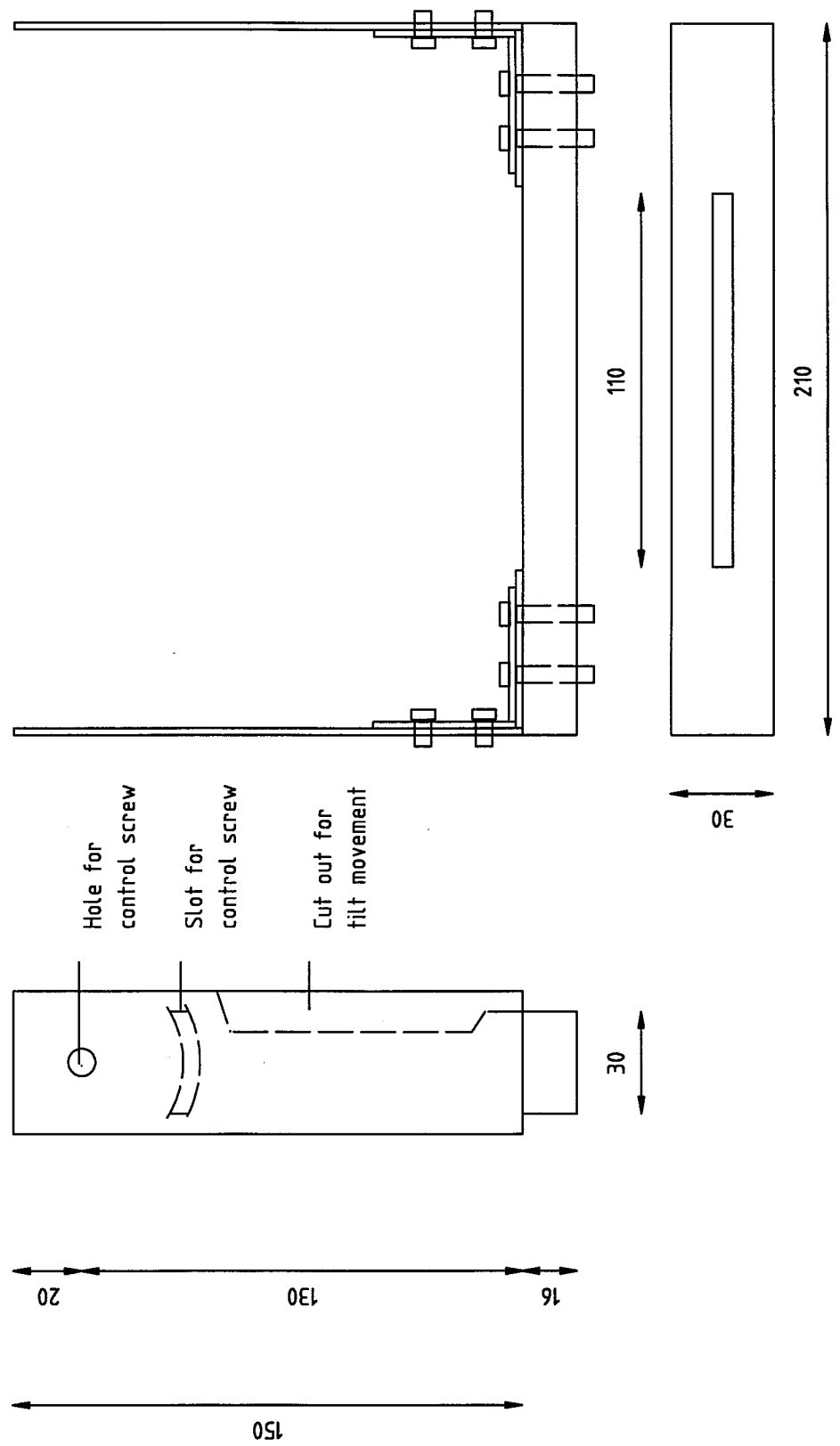


Figure 24: Frame connectors

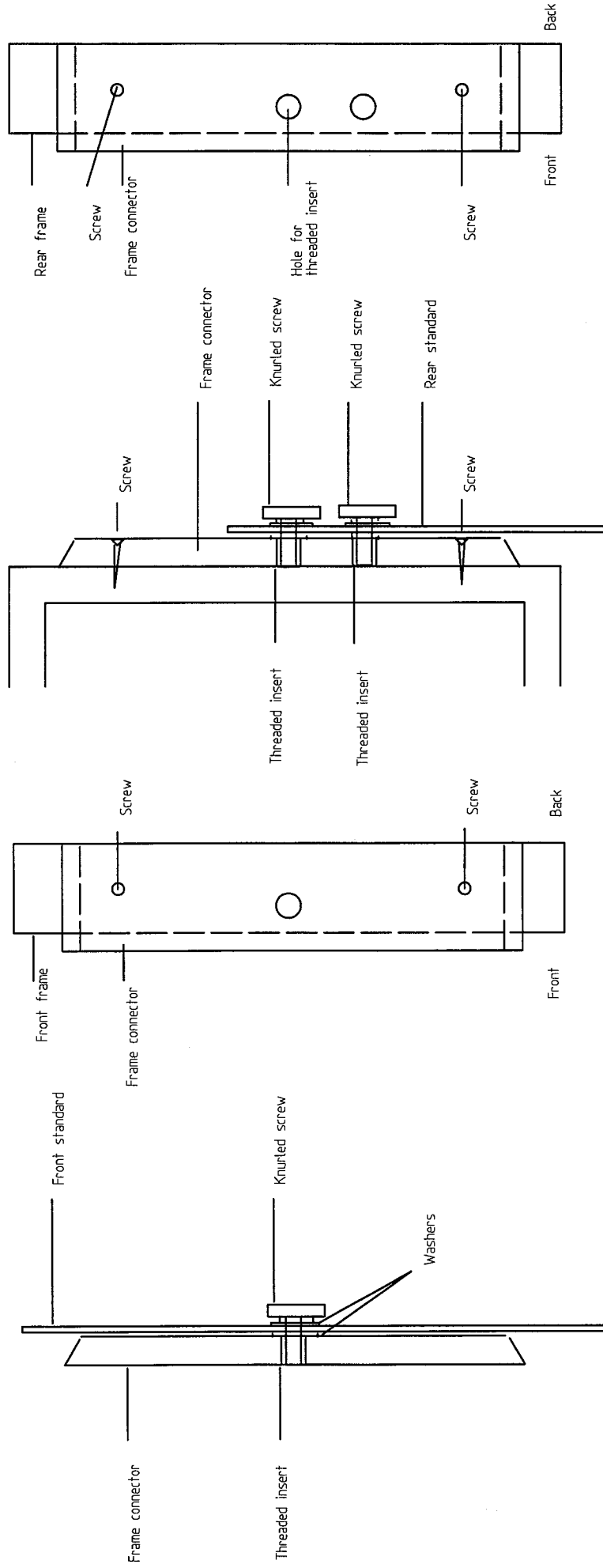




Figure 25: Sliders

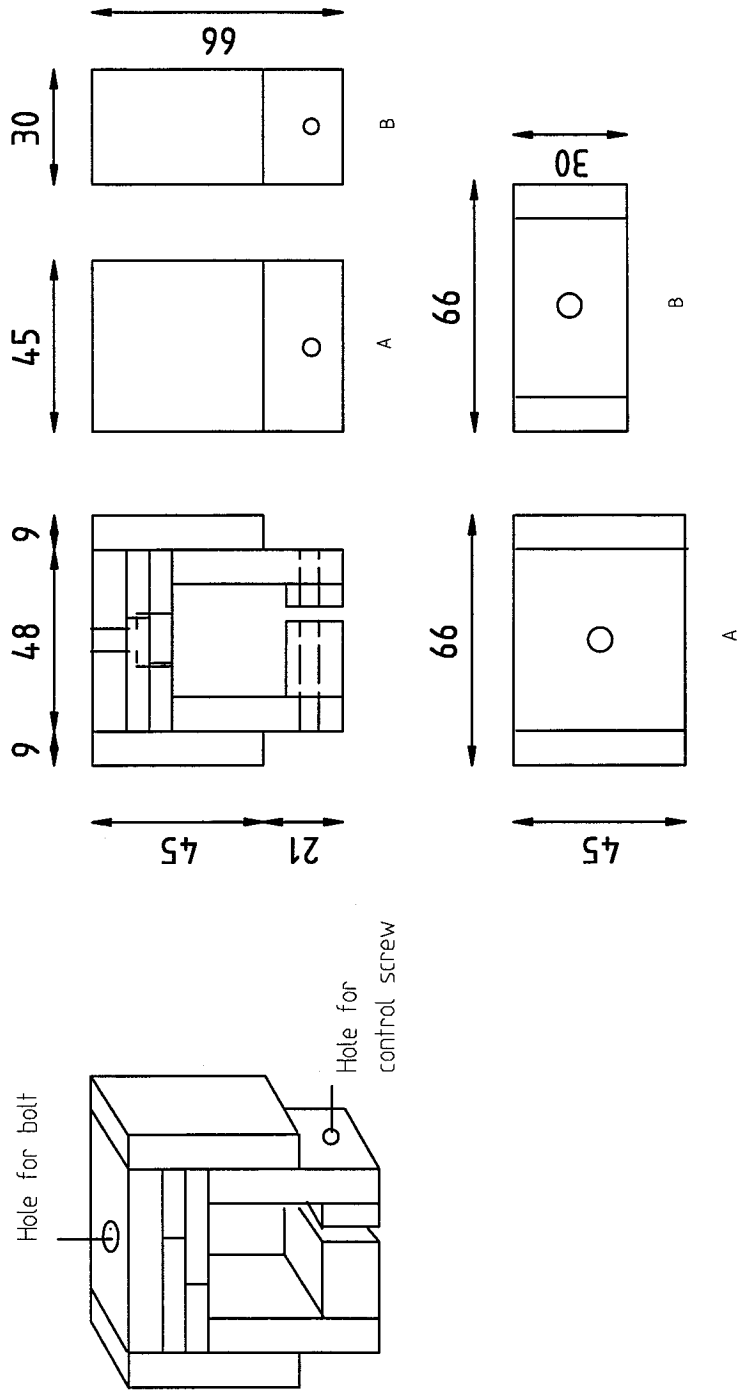


Figure 26: Tripod block

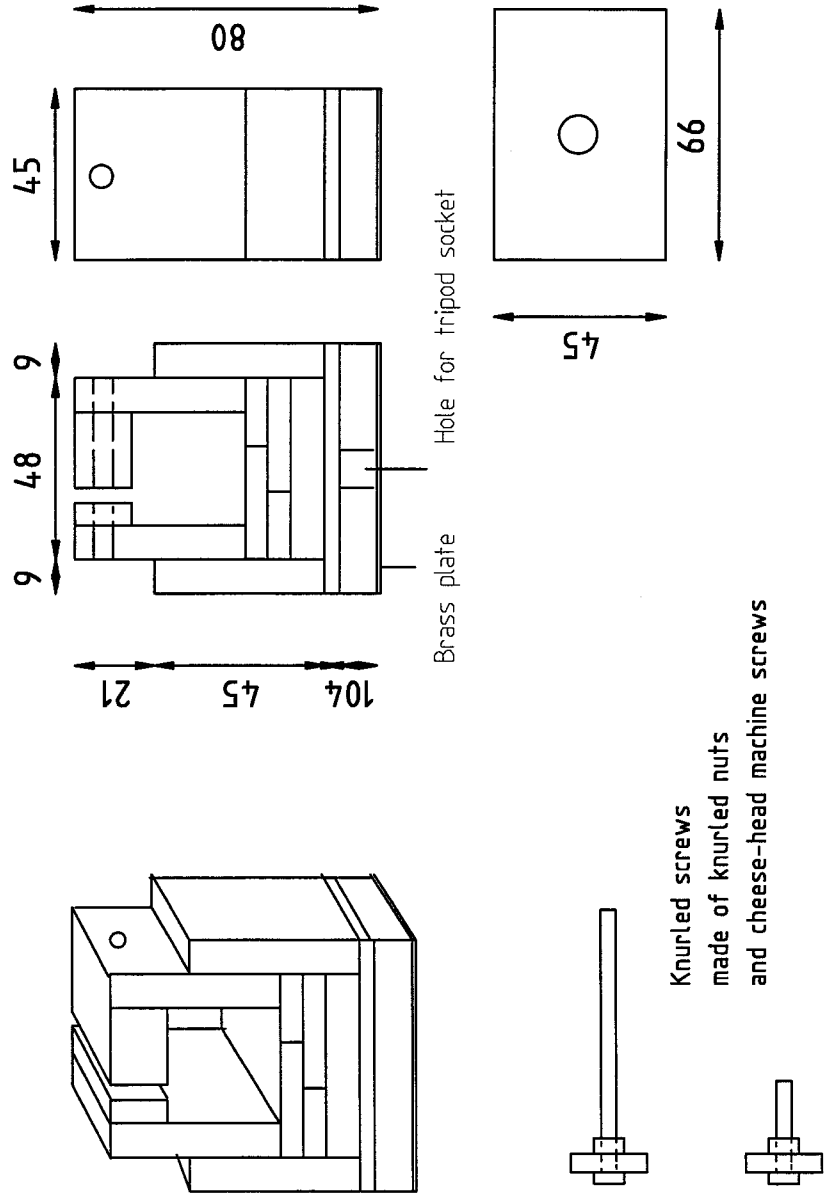


Figure 27: Bellows lock

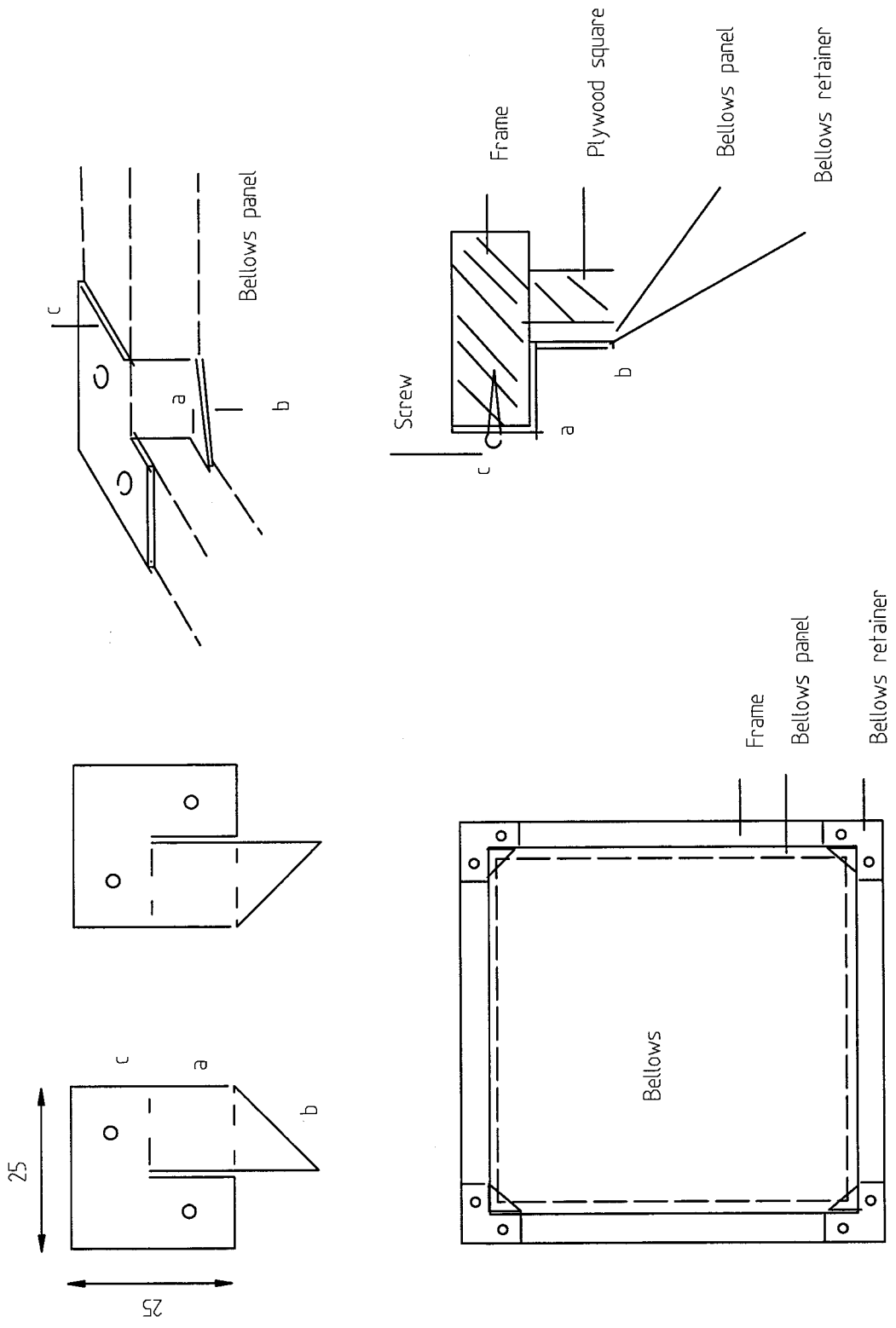


Figure 28: Bag bellows (sketch)

Measurements in centimeters

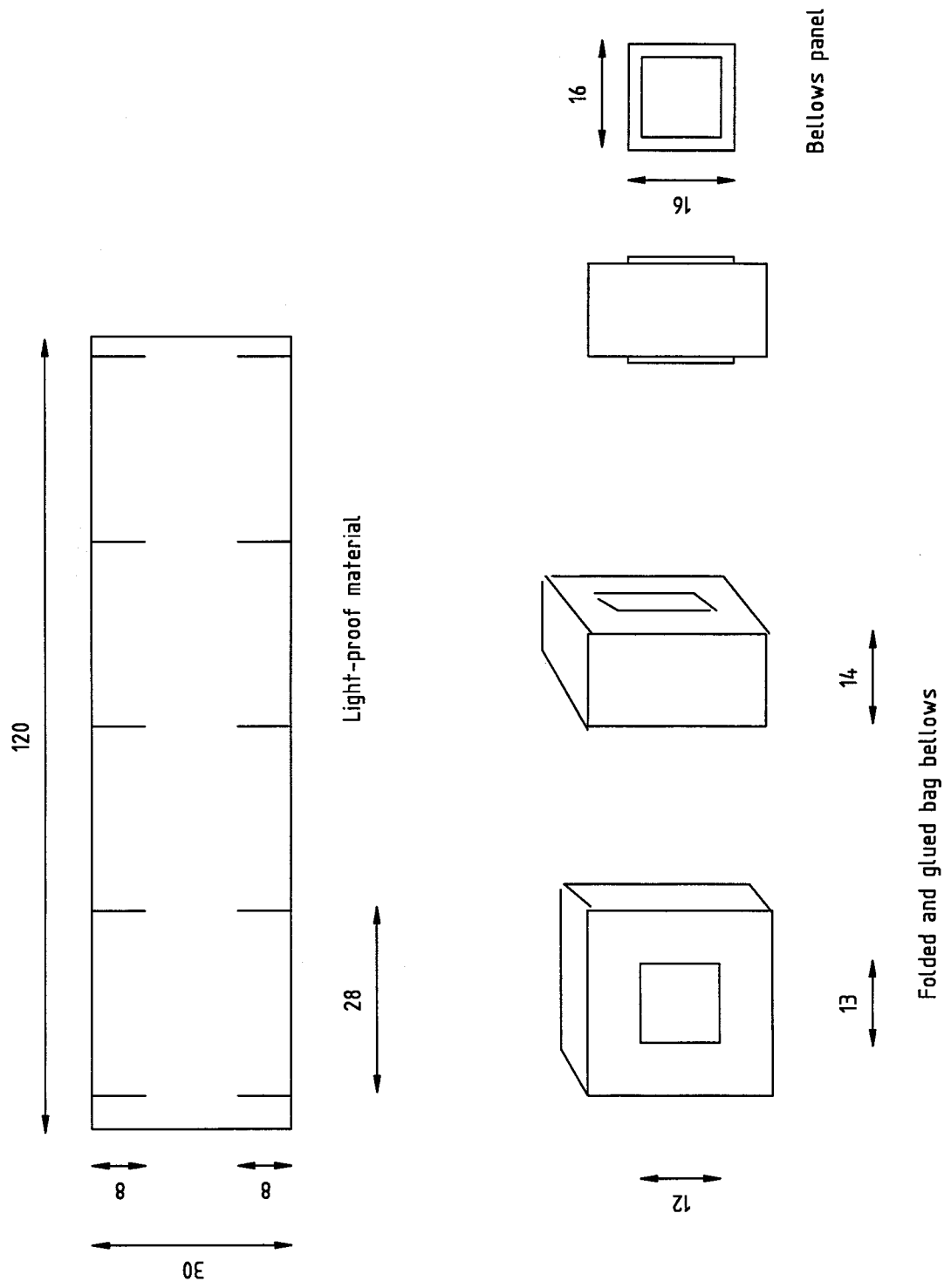


Figure 29: Lens case (sketch)

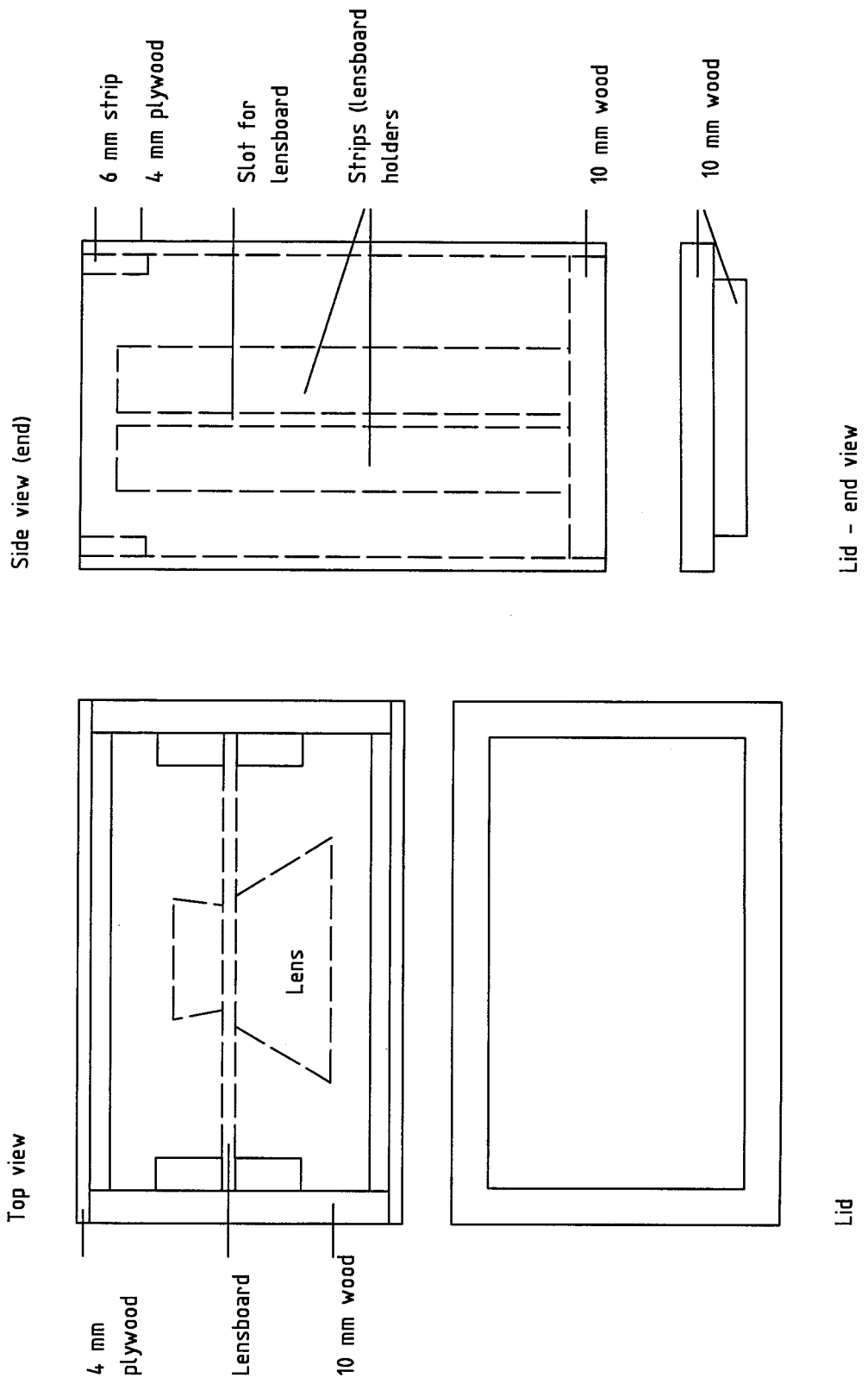


Figure 30: Camera case (sketch)

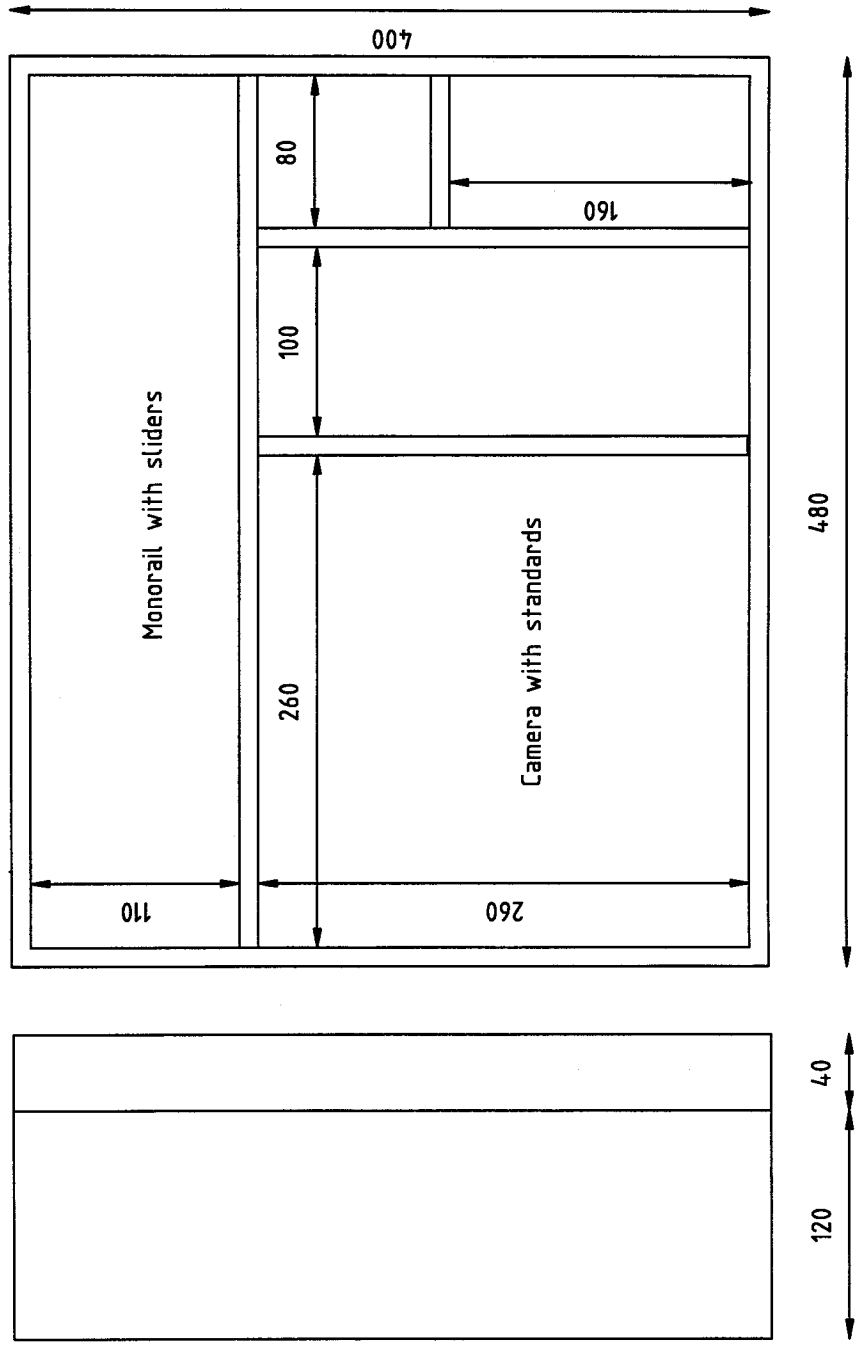


Figure 31: Step-up adapter for 5 x 7 (sketch)

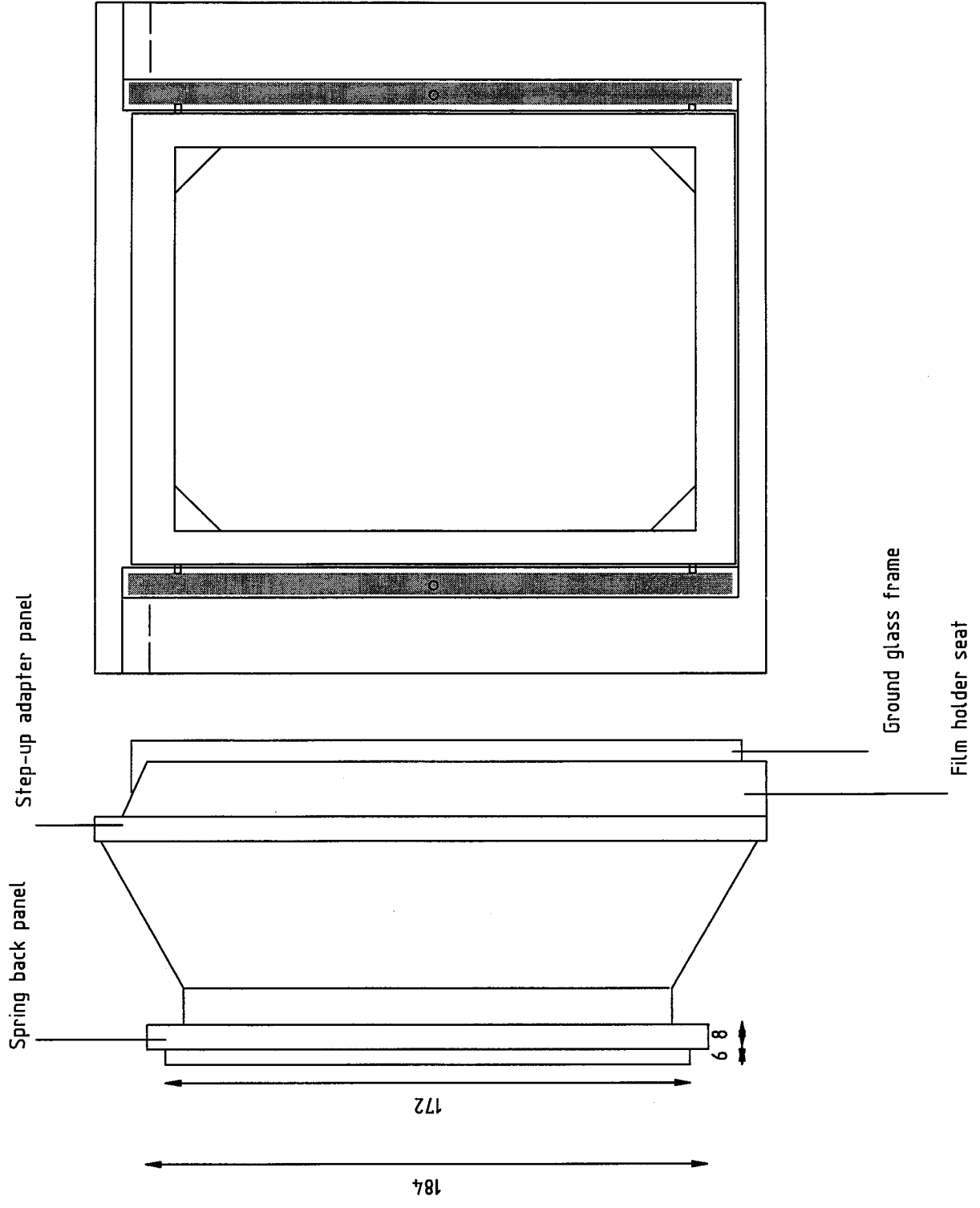


Figure 32: Standard 4 x 5 in. film holder (scale 1 : 1)  
184

